



Characterisation of fuel cells and hydrogen storage materials and devices

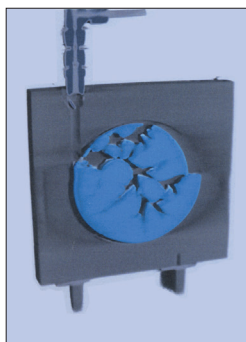
Neutron characterisation techniques can:

- Show **where H₂ is flowing** within a storage tank or a fuel cell.
- Show where and how **H₂ is fixed and released** by storage materials.
- Investigate **membrane** materials and **fuel cells** in operation.

Typical areas of study:

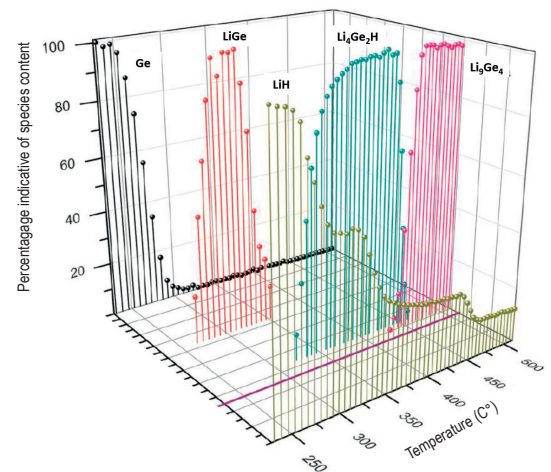
- H₂ storage materials: H₂ uptake and release under various operating conditions.
- H₂ storage devices: in operando H₂ imaging.
- Materials for fuel cell membranes.
- Fuel cells in operation: tracking water distribution within the cell at the μm level.

Examples



A neutron tomography image. It reveals the development of defects in a **light metal hydride storage material**: channels developing inside a hydrogen tank after two cycles of loading and unloading with hydrogen.

Dehydrogenation pathways in an **H₂ storage material**. Powder neutron diffraction experiments on a lithium-hydride/germanium composite (LiH/Ge) can reveal the species that form as the composite decomposes when slowly heated to 500°C.

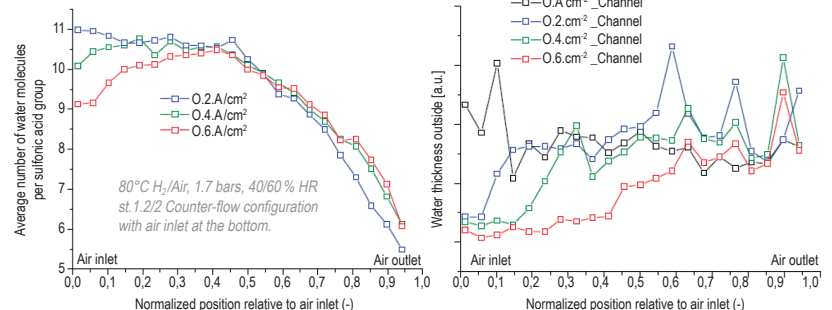


A fuel cell membrane material.

Beside as an example: the refined crystal structure of bismuth niobium oxide obtained from neutron diffraction data.

- Bismuth atoms
- Oxygen atoms
- Polyhedra-centred niobium atom

Small-angle neutron scattering techniques make it possible to **measure the variation in water content** in both the vertical and horizontal planes throughout the **fuel cell** simultaneously. (*Left*) Water content in the membrane and (*right*) water outside the membrane, along the flow field in the channel, for different current densities.



REFERENCES

Pranzas et. al., *Adv Eng Mat*, (2011); Abbas M. A. et al., *Phys. Chem. Chem. Phys.* (2013); Ling C. et. al., *J. am. Chem. Soc.* (2013); Morin A. et. al., *Fuel Cells* (2012); H₂FC newsletter (2015); Neutrons and energy ILL (2015).

SINE2020 Industry Consultancy is now open for requests.

Proof-of-concept experimental beam time is being offered to Industry!

RAPID ACCESS

Fast-stream processing for industrial applications, optimising result lead times.

CONFIDENTIALITY

Activity covered by non-disclosure agreements. Only company name and measurement type to be published.

FLEXIBLE SERVICES

In many cases industrial processes and conditions can be re-created in the test laboratory. Final data analysis and reporting are provided.



EXPERT CONSULTANCY

Industrial R&D professionals in collaboration with experienced specialists from European neutron centres.

PATNERS FROM:

Czech Republic, France, Germany, Hungary, Netherlands, United Kingdom.



Science & Technology Facilities Council
ISIS



SINE2020 receives funding from the European Union's Horizon 2020 research and innovation programme under grant agreement N° 654000